



A Study of Spiritual Intelligence of Higher Secondary School Students in context of Area

Mr. Ajay B. Raval

Ph. D. Scholar, Kadi Sarva
Vishwavidyalaya, Gandhinagar

Dr. Veenaben K. Patel

Guide, Kadi Sarva Vishwavidyalaya,
Gandhinagar

Abstract

Spiritual Intelligence is concerned with the inner life of mind and spirit and its relationship to being in the world. Spiritual Intelligence (*SI*) implies a capacity for a deep understanding of existential questions and insight into multiple levels of consciousness. **Objective:** 1) To determine the level of Spiritual Intelligence in the students. 2) To find out the effect of Area on Spiritual Intelligence of the students. Research Area for present study is Educational Psychology. **Population and Sample:** The students studying in Standard-11 in Gujarati Medium Higher Secondary Schools of Gandhinagar District became the population of the present study. Selection of school was by Stratified Random Technique and selection of students was by cluster sample method. Sample size was of 423 students. **Research Method:** "Survey Method" was selected for present study. **Tool:** Self Constructed SI Scale was used for Data Collection. **Data Analysis:** t-test was applied for hypotheses testing and P_{33} and P_{67} was used to determine the level. **Findings:** 1) According to Level of Spiritual Intelligence 33.57% Students are in Low Level and Medium Level and 32.86% Students are in High Level. 2) In Low and Medium Level of Spiritual Intelligence, percentage of rural area students is more than urban area students and in high Level it is vice versa. 3) In matter of Spiritual Intelligence students of rural and urban area are equal.

Key-Words: Spiritual Intelligence, Area, Higher Secondary School, Gandhinagar

1. Introduction

Spiritual Intelligence is concerned with the inner life of mind and spirit and its relationship to being in the world. Spiritual Intelligence (*SI*) implies a capacity for a deep understanding of existential questions and insight into multiple levels of consciousness. Spiritual Intelligence also implies awareness of spirit as the ground of being or as the creative life from stardust to mineral, vegetable, animal, and human existence implies some form of intelligence emerges as consciousness evolves into an ever-deepening awareness of matter, life, body, mind, soul and spirit. Spiritual Intelligence, then, is more than individual mental ability. At higher secondary level of schools, students have their enough capability to judge them self. Investigator has also witnessed that students of higher secondary school have ability to think.

2. Review of related literature

Abstract from past researches is presented here:

Garia, Hemalata has studied in 2005 the title was "A Study of Intellectual Ability, Emotional Intelligence and Spiritual Intelligence of Post Graduate students in relation to their Gender, Academic Attainments" the main findings were 1) boys and girls were equal in overall Emotional

Intelligence.2) Students from arts stream were having more emotional intelligence concerned with handling their relationship than commerce stream. 3) Students from science stream were having more emotional intelligence concerned with recognizing emotions than arts stream. **Chang (2007)** studied that adolescence can be a time when teens attempt to reconcile their own desires and needs with the wishes of their parents.

3. Statement of the problem

For present study, Researcher decides to study Spiritual Intelligence of Higher Secondary School students in context Area. Thus title was as followed:

A Study of Spiritual Intelligence of Higher Secondary School Students in context of Area

4. Importance of the study

A research is a continuous process which is connected to a certain direction and therefore it is obvious for a researcher to keep in mind the importance of the study.

- Teacher and Parents will get appropriate guidance to know Spiritual Intelligence of the higher secondary School students.

5. Objectives

The following objectives were determined for present study.

- To determine the level of Spiritual Intelligence in the students.
- To determine the level of Spiritual Intelligence in the students in context of Area.
- To find out the effect of Area on Spiritual Intelligence of the students.

6. Research Area

Research in Education has so many research areas. In present study, researcher wants to study and assess the Spiritual Intelligence of the higher secondary school student. So, Research Area for present study is **Educational Psychology**.

7. Hypotheses

Following null hypotheses are formulated according to the study objectives:

H_{01} There will be no significant difference between the mean score of Spiritual Intelligence obtained by students of rural area and urban area.

8. Limitation of the study

The study was conducted considering the following limitations:

- The limitation of sampling technique remains as a limitation of the study.
- The findings was derived from the response of the respondents so that remains a limitation of the study

9. Delimitation of the study

Research is a broad and wide subject. Due to limitation of time, energy and money, he/she is delimiting the study.

Delimitation for the present study is as followed:

- This study was delimited to the students of Standard-11 of Gujarati Medium Higher Secondary Schools of Gandhinagar District only.

10. Definition of the key-words

❖ **Spiritual Intelligence:**

Theoretical Definition:

Spiritual Intelligence is a term used by some Philosophers, Psychologists and developmental Theorists to indicate spiritual parallels with IQ (Intelligence Quotient) and EQ (Emotional Quotient). Spiritual Intelligence is a higher dimension of intelligence that activates the qualities and capabilities of soul, in the form of wisdom, compassion, integrity, joy, love, creativity, and peace, which results in a sense of deeper meaning and purpose combines with improvements in a wide range of important life skills and work skills.

- Richard Griffiths

Operational Definition:

In present study, scores obtain by the students on self-constructed Spiritual Intelligence Scale was considered as a Spiritual Intelligence of the students.

11. Variables

Following are the variables for the present study:

Independent Variable

No.	Independent Variable	Level
1	Area	Rural
		Urban

Dependent Variable

In the present study, the Spiritual Intelligence of higher secondary school students is considered as the Dependent Variable.

Controlled Variable

District: Gandhinagar

Medium: Gujarati

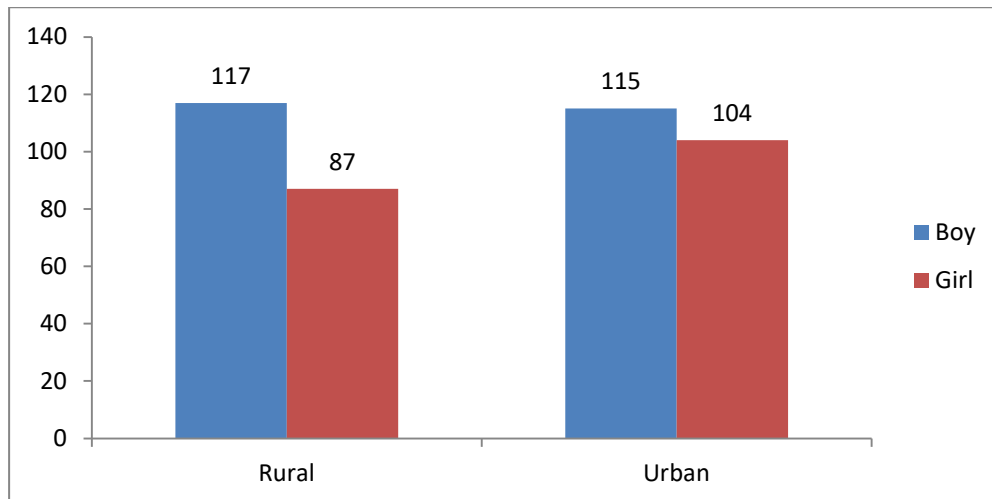
Standard: 11

12. Population and Sample

The students studying in Standard-11 in Gujarati Medium Higher Secondary Schools of Gandhinagar District became the population of the present study. The list of all higher secondary school of Gandhinagar District was prepared. All schools were classified into general stream and science stream schools and after into rural and urban area. Schools were selected by Lottery Method. All students studying in selected schools were the sample of present study by cluster method. Thus, selection of school was by Stratified Random Technique and selection of students was by cluster sample method. At last, sample size was of 423 students.

Table: A Sample

Gender>	Boy	Girl	Total
Area V			
Rural	117	87	204
Urban	115	104	219
Total	232	191	423



13. Research Methodology

Research wants to get the information from the mass and wants to know the present scenario. So, he selected the “Survey Method” for present study.

14. Tool Construction

To construct the Spiritual Intelligence Scale, researcher followed the following steps:

- Step-1: In-depth study of Spiritual Intelligence
- Step-2: Determine the component for Spiritual Intelligence
- Step-3: Writing the statements
- Step-4: Primary form of Spiritual Intelligence Scale
- Step-5: Pre-Piloting
- Step-6: Secondary form of Spiritual Intelligence Scale after necessary changes
- Step-7: Expert review for Secondary form of Spiritual Intelligence Scale
- Step-8: Piloting after necessary changes suggested by Experts review
- Step-9: Item Analysis
- Step-10: Final Form of Spiritual Intelligence Scale

15. Data Collection

Permission of selected schools’ principals was asked. After getting the permission rapport was established with the students. Tools were given to students to get response. After giving enough time tools were collected.

16. Data Analysis

- Obtain data was entered into Excel Programme of the M.S. Office.
- Data was classified as per objectives and Hypotheses with the help of Filter.
- To determine the level P_{33} and P_{67} was calculated.
- To check the null-hypotheses, “t”-test was applied.

Table: B

Level of Spiritual Intelligence

Level	Norms		No. of Students	%
Low	Min-P33	416-618	142	33.57
Medium	P33-P67	619-687	142	33.57
High	P67-Max	688-794	139	32.86
Total			423	100

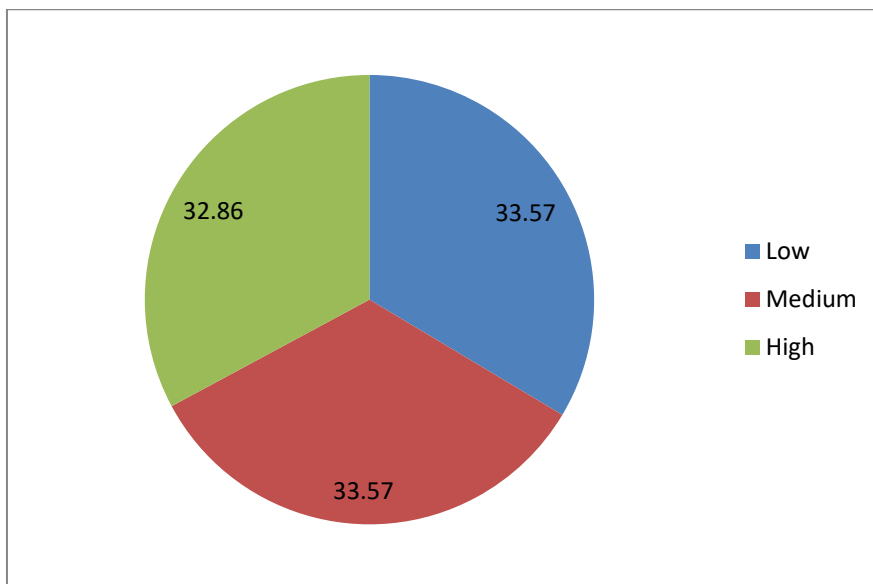


Table: C

Level of Spiritual Intelligence in context of Area

Level	Norms		Rural		Urban	
			No. of Students	%	No. of Students	%
Low	Min-P33	416-618	69	33.82	73	33.33
Medium	P33-P67	619-687	72	35.29	70	31.96
High	P67-Max	688-794	63	30.88	76	34.70
Total			204	100	219	100

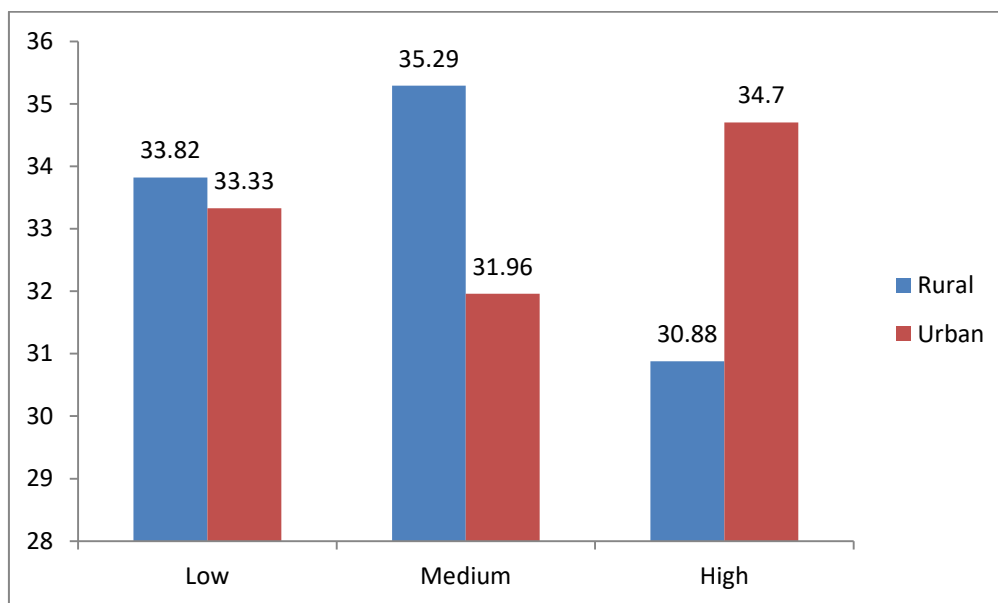


Table: E

Hypotheses Testing

Ho	Group	N	M	SD	Sed	C.R.	Remarks
Ho1	Urban	219	647.59	75.43	7.35	0.17	NS
	Rural	204	646.35	75.71			

17. Findings

- 1) According to Level of Spiritual Intelligence 33.57% Students are in Low Level and Medium Level and 32.86% Students are in High Level.
- 2) In Low and Medium Level of Spiritual Intelligence, percentage of rural area students is more than urban area students and in high Level it is vice versa.
- 3) In matter of Spiritual Intelligence students of rural and urban area are equal.

18. Conclusion

Spiritual Intelligence is essential topic to explore. It is more important for Students, Teachers and Educationists. This is humble attempt to research the SI among Higher Secondary Schools. More tryouts should be done for getting support to the result of present study.

19. Bibliography

- Safara, Maryam and Bhatia, M.S. (2013), *Spiritual Intelligence*, Delhi Psychitary Journal, Volume-16, No.2, Page No.412
- Rosemberg, M. (1965), *Society and the adolescent self-image*, Princeton, NJ: Princeton University Press.
- Agrawal J. C. (1996), *Education Research and Introduction*, New Delhi:Arya Book Depot.
- Patel, R. S. (2009), *Shaixanik Sanshodhana maate Ankadashaastreey paddhatio*, (2nd Ediction), Ahmedabad, Jay Publication